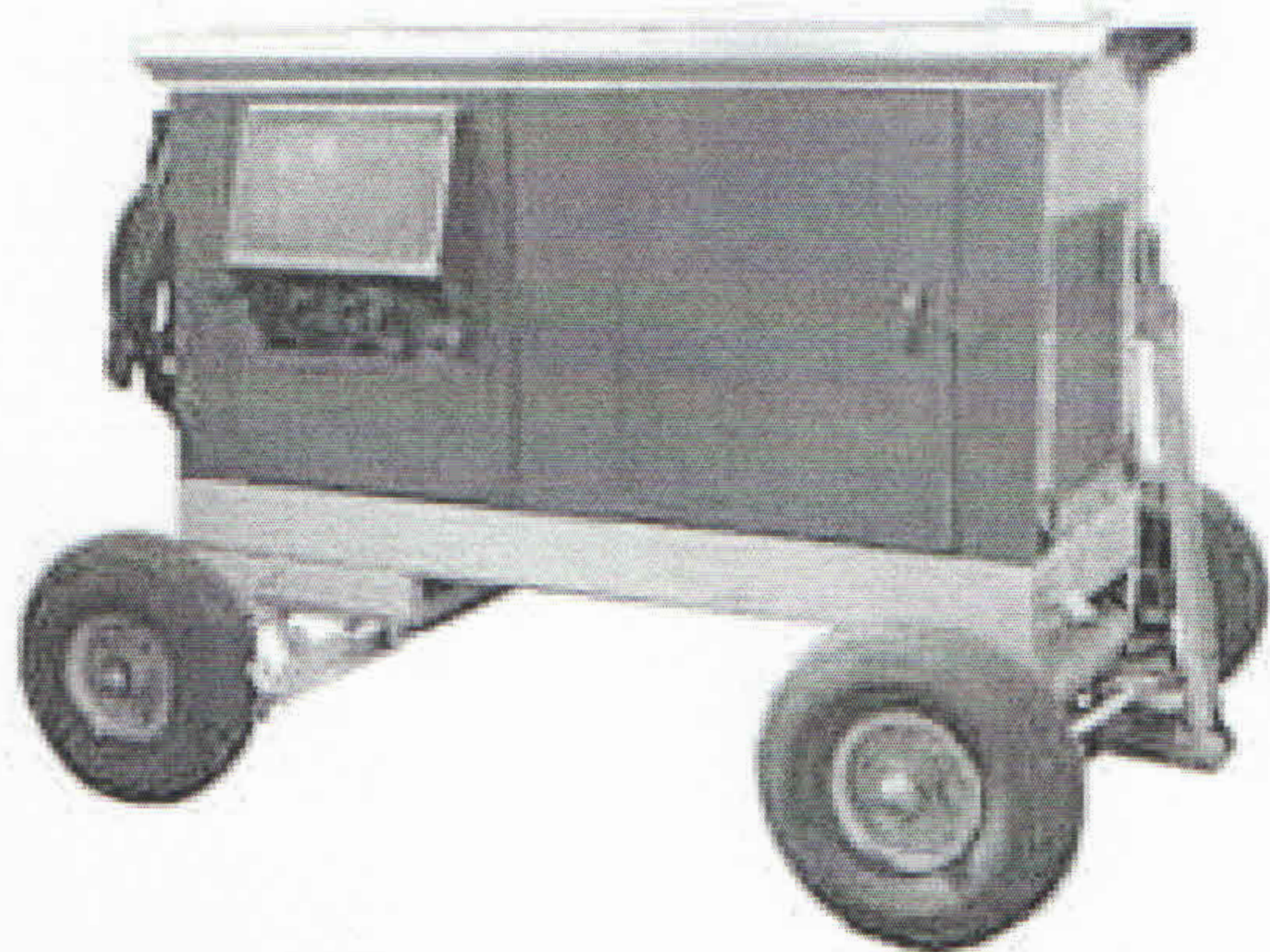




## 28.5V D.C. Ground Power Unit Model Jet-Ex II



The Hobart Jet-Ex II provides ground electrical power characteristics tailored to the requirements of Turbo-Jet, Turbo-Prop, and piston engine executive aircraft with 28.5 volt D.C. electrical systems. The Hobart Current Limiting "Soft-Start" control, standard on the Jet-Ex II, is recommended by most turbine-powered aircraft and helicopter manufacturers for protection of the engine starter shear section. Inrush current may be preset to any limited value between 700 and 1300 amperes as recommended by the aircraft manufacturers. A special 400 ampere "low" current limiting system is provided for helicopter and small turbine starting. The self-contained Jet-Ex II can be mounted on an optional hobart trailer.

### Electrical Characteristics:

**Voltage Output:** 28.5 volts D.C. )

**Capacity:** Adjustable 700 through 1300 amperes current limiting "Soft-Start."

The current limiting system provides constant voltage up to a pre-selected current value at which time the voltage drops to maintain the selected inrush current desired for each aircraft or helicopter.

**Current Rating:** 530 amperes continuous at 28.5 volts.

### **Optional Equipment:**

- 20 or 30 feet D.C. Output cable with standard aircraft plug.
- 14.25 volt D.C. circuit in conjunction with 28.5 volt unit
- Lift off doors for pickup truck mounting
- Trailer - 6.90 x 9 inch tires with hand operated parking brake and towing eye. Trailer designed for ramp service.
- Spark Arrestor - Mufflers
- Carburetor Air Heater





## Hobart Jet-Ex II 28.5V D.C. Ground Power Unit

### Specifications:

#### Engine Accessories and Controls:

- Water Temperature Gauge
- Oil Pressure Gauge
- Battery Charging Ammeter
- Battery Charging Alternator
- Ignition Switch
- Ignition Light
- Starter Switch
- Throttle Morse Control
- Choke
- Engine Hour Meter
- Tachometer
- Fuel Gauge
- Oil Filter
- Fuel Anti-Siphon Solenoid
- Engine Overspeed Device
- Low Oil Pressure Protection

#### Dimensions:

##### On Hobart Trailer:

- Length - 87 1/2 inches (2223 mm)
- Width - 63 inches (1600 mm)
- Height - 65 inches (1651 mm)
- Weight - 2320 lbs. (1052 Kg)
- Tread - 56 inches (1422 mm)
- Wheelbase - 63 inches (1600 mm)
- Ground Clearance - 5 inches (127 mm)

##### Self Contained:

- Length - 78 3/4 inches (1999 mm)
- Width - 30 inches (762 mm)
- Height - 48 inches (1219 mm)
- Weight - 1900 lbs. (852 Kg)

#### Generator Engine Controls:

- Voltmeter
- Ammeter
- Generator Pilot Light
- Generator On-Off switch
- Voltage Buildup Push-button
- Field Rheostat (Manual)
- Auto-Manual Switch
- Current Limit Range Toggle Switch
- Current Limit Rheostat
- Static Voltage Regulator
- Clearance and Panel Light Switch
- Overvoltage Relay
- Overload Relay
- Load Contactor

#### Optional Equipment:

- 30 feet D.C. output cable with standard 28.5V D.C. cable head
- 30 feet D.C. output cable with MS-25019 rectangular plug, no sensing leads required.
- A 14.25 volt circuit in conjunction with 28.5 volt unit.
- Lift-off doors for pickup truck mounting
- Trailer - 6.90 x 9 inch tires with hand operated parking brake and towing eye. Trailer designed for ramp service.
- Spark Arrestor - Muffler
- Carburetor Air Heater